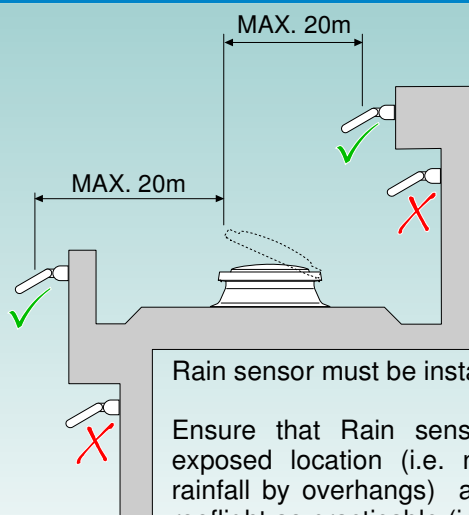


Siting Location

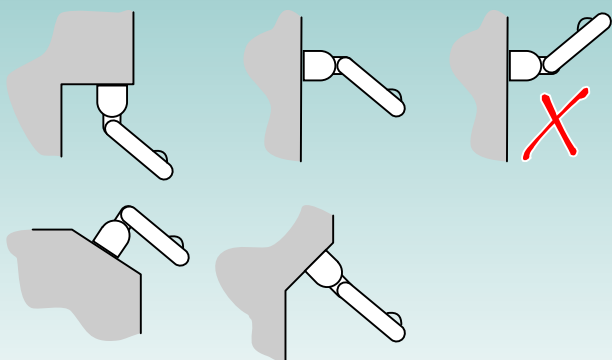


Rain sensor must be installed externally.

Ensure that Rain sensor is sited in an exposed location (i.e. not protected from rainfall by overhangs) and as close to the rooflight as practicable (in any event within a maximum of 20m distance away from the opening side of the rooflight).

Where rain sensors are installed beneath overhangs or the sensor is not clearly exposed to vertical rainfall, the sensor will not function.

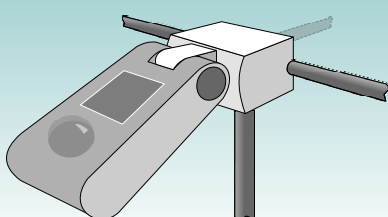
Siting Mounting



Rain sensor is hinged, meaning that it can be fitted to vertical or horizontal surfaces - however, care must always be taken to ensure the sensor is oriented correctly (i.e. with clear plastic outer to the top, white plastic face to the underside), and angled so that water will drain from it.

Siting Power

Rain sensors require their own fused 3Amp 230V a.c. power supply. A cable route for this must be defined prior to fitting. Cable can enter from the left, right, bottom or through the substrate.



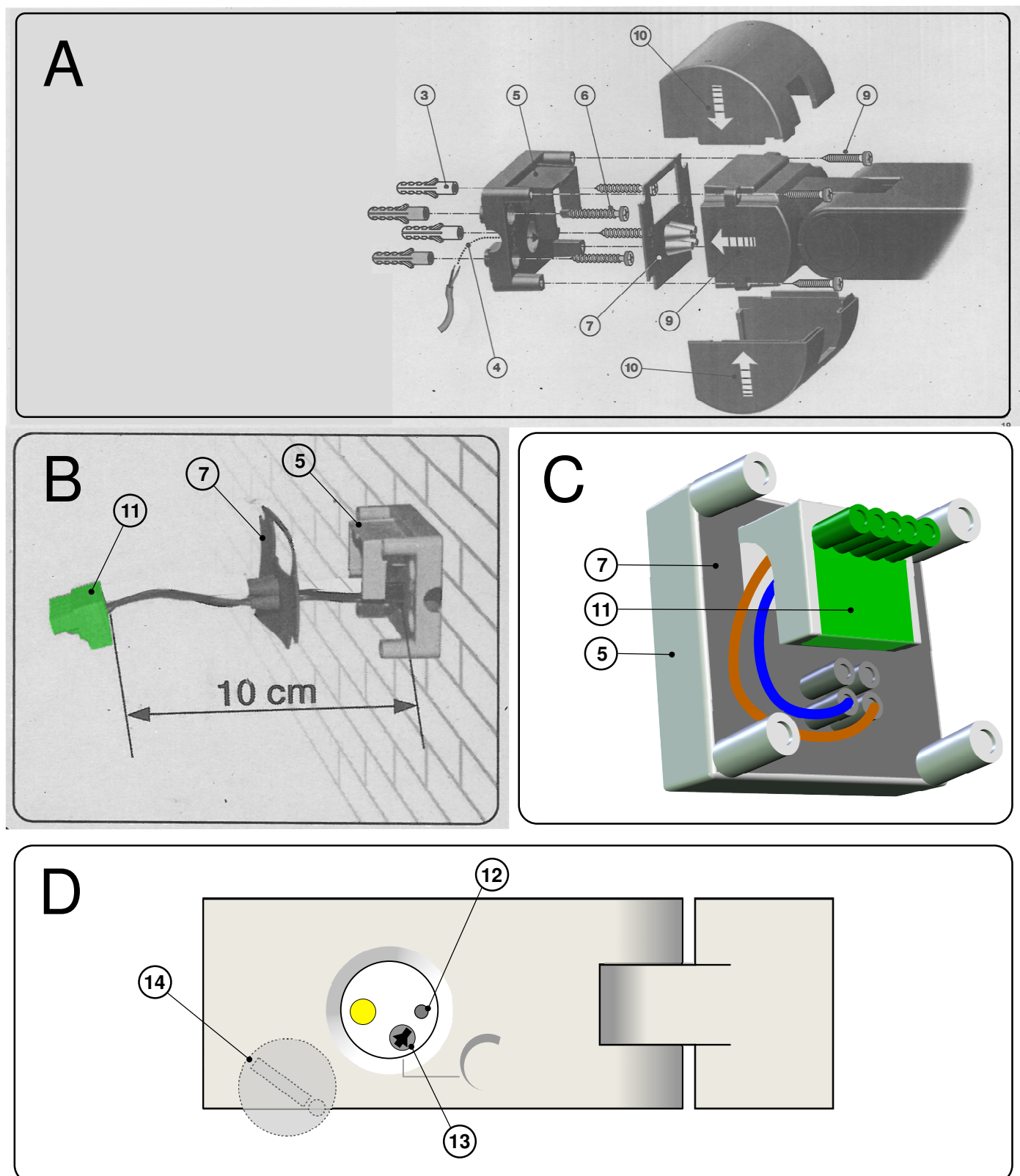
Fitting Instructions

NB refer to diagrams overleaf

1. Remove moulded back plate from box. Back plate comprises:
 - a) White moulded mounting plate (5)
 - b) Grey moulded rubber grommet / sealing washer (7)
 - c) Green electrical connector plug (11)
2. Lift away the grey grommet / sealing washer (7) to expose wall fixing positions, and use as template to mark 4No. fixing positions for drilling, with the green connector at the top.
3. Drill 4No. hole positions and fit rawl plugs or similar (3)
4. Thread 2 core electrical supply cable (3-5A rated flex) (4) through the access point on the mounting plate (5) and the grey grommet (7) from the rear.
5. Align the back plate (5) with the holes, ensuring the green connector is at the top, and fix in place using 4no. suitable corrosion resistant screws (6).
5. Remove the green connector plug (11) from the back plate assembly. Connect the Live (Brown) cable to the terminal marked "L". Connect Neutral (Blue) cable to the terminal marked "N" (NB it is recommended that approx. 100mm free cable is left to allow for future maintenance, see Diagram B). Ensure terminals are securely fastened.
6. Re-fit the connector plug (11) to the back plate assembly (5) with the screw terminals facing downwards. Ensure the green connector is fully engaged in the backplate, folding the free cable behind the plug.
7. Push the rain sensor on to the back plate assembly and secure with 4No. screws supplied (9).
8. Power on and check that LED light (12) on the back (underside) of the rain sensor illuminates. If the LED fails to illuminate, check wiring connections.
9. Do NOT adjust the black rotary dial (13) behind the transparent cover (14) on the back of the unit. This should always be in the fully clockwise position (factory set) to ensure correct operation. NOTE THAT IF THIS DIAL IS IN ANY OTHER POSITION IT COULD CAUSE THE ROOFLIGHT TO OPEN INAPPROPRIATELY.
10. Once connections have been checked & tested, and are satisfactory, clip on the 2 part cosmetic cowl (10) to the back plate / mounting assembly (knock out cable access first if required).

Fitting Diagrams

NB refer to these diagrams when working through fitting instructions overleaf.



TECHNICAL SUPPORT: For any technical information/queries please contact your supplier.

Brett Martin Daylight Systems operates a policy of continuous product improvement, and reserves the right to alter specifications at any time without notice. Every effort has been taken to ensure all details contained in this document are correct at the time of going to press but this document should be used only as a guide and does not in any way form part of a contract or warranty. It is the customer's responsibility to ensure that the product is suitable for the actual conditions of use, which are beyond the control of Brett Martin Daylight Systems.